



Ascentria
CARE ALLIANCE

*150 years strengthening
New England communities*

**2021
Annual Report**



Children and Family Services



Good News Garage



Immigration Legal Assistance



In-Home Care

Ascentria Care Alliance Services

Children and Family Services

- Intensive Foster Care
- Young Parent Living Program
- Therapeutic Family Connections
- Unaccompanied Refugee Minors

Good News Garage

Immigration Legal Assistance

In-Home Care

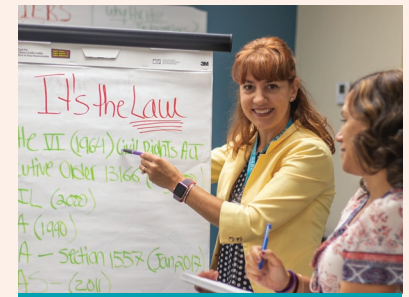
Language Bank

Mental Health and Disability Services

Services for New Americans

Services for Older Adults

- Laurel Ridge Rehabilitation and Skilled Care Center
- Luther Ridge
- Lutheran Home of Southbury
- Lutheran Rehabilitation and Skilled Care Center
- Presentation Rehabilitation and Skilled Care Center
- Quaboag Rehabilitation and Skilled Care Center



Language Bank



Mental Health & Disability Services



Services for New Americans



Services for Older Adults

OUR EMPLOYEES DESERVE TO THRIVE

This pandemic has laid bare the degree to which we rely on each other to make it. We are all dependent on each other and we need everyone to thrive in order for society to thrive. It has also become clear that there are massive disparities and inequity – especially when it comes to those who are doing the most critical work of caring for others. This work has always been important, but especially so in times like these.

And yet we as a society don't seem to value this work – or the people who do it – at the level they deserve. They are working tirelessly to improve the lives of others, but are often left rewarded for that with low pay and the need to work multiple jobs just to get by. This doesn't seem right or fair.

We have come to the conclusion that our mission to strengthen communities by empowering people to respond to life's challenges, as well as our vision of thriving communities where everyone has the opportunity to achieve their full potential regardless of background or disadvantage, must apply not only to our clients but to our staff.

The majority of our employees are in direct care roles, such as our In-Home Care and Mental Health and Developmental Disabilities programs, where they directly attend to the needs of clients. Without healthy, supported and thriving staff, we cannot effectively serve our clients. The harsh reality is that government funding for the social services sector does not allow for adequate employee supports. Base funding forces our staff to work multiple jobs just to provide for basic necessities for themselves and their families.

We must do better. We must raise our voices in advocacy for those who serve – for adequate pay for the work they are doing. Otherwise, in addition to the unfairness, we will not be able to serve those who need it. There are simply not enough people who can or will do this critical work, especially if it is valued less than other jobs. It is hard to reconcile how we will pay more for someone to make you a cup of coffee than we do for someone to care for your mother. There is something fundamentally wrong with this picture.

During my recent travels in the field, I was able to meet clients and see our staff through their eyes. One of our In-Home Care clients asked me why we can't pay her caregiver more money. I told her that the world unfortunately doesn't recognize how important this work is and doesn't give us enough money to pay more, and we actually lose money providing these services. Then she asked why we continue to do it. I told her that we exist to serve her – because she deserves it. But to continue to do this, we are going to have to find better ways to support our staff to reach their dreams, too.

We need you to join us in this effort. We need your voices raised in support of critical bills in the legislature that would better fund the work. We need your investments so that we can support our staff emergency fund (which has been almost depleted over the past two years) – and additional investments to provide training and other supports that would help the people who serve. These amazing people have been through a lot over the past two years – and they deserve our focus and attention on making sure they are healthy and thriving, too.

We are forever grateful to all of you who are a part of making this journey and mission possible.



*William Mayo, Board Chair;
Angela Bovill, President and CEO*


William Mayo
Board Chair


Angela Bovill
President and CEO

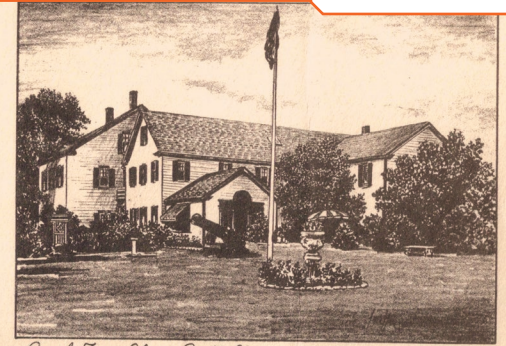
**The harsh reality is
that government
funding for the
social services
sector does not
allow for adequate
employee supports.**

Celebrating 150 years of making a difference in the lives of others

1870s

Ascentria's bright future would not be possible without the strength and convictions of our past. We are here today because of the foresight and generosity of a pious brewer by the name of Gottlieb F. Burkhardt, whose summer farm in West Roxbury, MA would eventually become the Martin Luther Orphan's Home at Brook Farm in 1872. A volunteer organization with a commitment to helping children as well as "aged, weak, and helpless persons," Brook Farm would soon be followed by the establishment of a Lutheran agency to assist lonely seafarers on the busy docks of Boston.

Our Social Ministry Had Begun!



Brook Farm Home, Boston, Mass.

2000s

 **Lutheran
Social Services**





1900s



Fast forward 150 years into the 21st Century, and though we have changed our name, our work and commitments are the same. Today, we serve our communities as Ascentria Care Alliance. Like the dedicated staff and generous supporters before us, we lead with our hearts, our hands and our voices, and are committed to inspire people to help one another reach beyond their current circumstances and realize new possibilities.



Ascentria
CARE ALLIANCE

Let's look at some of what we have been able to do because of your individual, collective and corporate contributions.



Afghan Resettlement Response

Unprecedented times call for innovation and bold actions

As many of you know, the last four years of dramatically increased restrictions, reduced refugee admissions and subsequent reduced federal funding left Ascentria with inadequate staffing. Yet despite the slashing of support for immigrants and refugees, we persisted – committed to serve those seeking asylum and refuge from war torn countries and sexual and work exploitation.

In September of last year, we were notified of the impending arrival of at least 500 Afghans to Massachusetts and New Hampshire – set to take place over the course of just a few months. Ascentria concluded that the only way to approach resettlement at this level and pace would be to tap into the power of local communities for help. And you responded, overwhelmingly with a resounding “Yes, we will and we must!”

In a matter of weeks, Ascentria partnered with community groups and organizations such as “Worcester Together” as led by the United Way of Central MA and the City of Worcester, the Shapiro Foundation, the Fish Foundation, the New Hampshire Charitable Foundation, and in Western Mass. Hannoush Realty and the Westfield State University Faith Community Group, to build a support network to welcome the Afghan arrivals.



Volunteer caring-circles, called Neighborhood Support Teams (NST) were formed. These groups operate on a volunteer basis to provide support services like transportation, housing assistance, cultural orientation and more, while giving Afghan families and individuals the time and space they need to heal. NST members have raised over \$600,000 to help support the needs of our new Afghan neighbors as

they begin their lives in New England. By organizing over 60 NSTs comprised of over 1,200 volunteers overseen by Ascentria case managers, together we are creating a sustainable community-based model of resettlement. In six months, we have become one of the largest co-sponsorship networks in the nation.

We have seen repeatedly how these volunteers are transforming people's lives, providing them with a greater sense of safety and support, and most critically the comfort that comes with their knowing a community is supporting them.

Please take a moment to read about just one of our NSTs.



Neighborhood Support Teams (NST)

NST “Team Hope”

David and Doreen Rinas are just two of the over 1,200 volunteers who generously stepped forward to sponsor Afghan families. They are members of the Refugee Immigration Ministry based in Malden, Massachusetts and have been welcoming refugees and asylum seekers from all over the world for the past twenty years.

Speaking fondly of their new Afghan neighbors, they state that they have developed a special bond with them. “Our first family are brothers. A twenty-four year-old and a sixteen year-old. They are wonderful individuals. One is going to high school, and the other one is taking classes online and looking for a job right now. They have a lot of empathy for their relatives at home who don’t have food and don’t have money. So they are frequent customers of Western Union, and I’m proud of them for doing that. Our other family is a delightful family – mom, dad and three children: one is just under two, a four-year-old and a seven-year-old,” says Doreen.

With a big smile, Dave chimes in to say “We really love playing with the children.”

“Yesterday we took the family to the beach because in Afghanistan there’s no coastline so they had never seen the ocean before. It was February, but they still took off their shoes and were running back and forth into the waves. The man in our family started talking to some other people who looked like they were from Afghanistan. It turns out it was this large group from



David and Doreen Rinas of Team Hope



Harvard, Massachusetts, which was another NST. They had four families and 15 children with them, and we were all at the same beach at the same time,” recounts Dave.

Dave continues, “There is this aspect of being able to experience another part of the world without having to go anywhere. We have visited other cultures and that’s a wonderful experience. But it’s also a wonderful experience to have people from another country move into your community and we get to see the world through their eyes.”

“It’s wonderful to be able to walk with them. Just such a blessing to be able to do this work. And I hope we’ll be able to keep doing it. Maybe with people from other places in the world,” says Doreen.

We thank the Rinas family for their dedication to helping Afghan people heal and rebuild their lives.

For those who have found their way to the United States, having been forced to leave their country and become refugees, it is a harrowing journey that often removes their feeling of dignity, safety and security. Folks like the Rinas family – and many of you – have helped to restore some of that dignity and helped them to rebuild their lives in a new land.

Thank you to our donors and volunteers who help us continue our mission to restore dignity, safety and security to all whom we serve.



Together, changing lives

At Ascentria, we recognize the importance of legislative advocacy as an effective way to bolster causes that support the change we are working toward in our communities. To that end, last year we added a director of government relations to the team whose goal is to influence decisions within political, economic, and social institutions.

A focused legislative agenda that thoughtfully prioritizes issues important to the work we do will set the course for maximum success. We have identified and categorized our legislative opportunities as either priority or secondary. The priority topics listed indicate that Ascentria will be a lead advocate on the topics and will allocate proper resources to push the legislative priority through direct legislative contact. Secondary topics indicate that Ascentria will support the projects alongside other organizations with a longer-term view, while providing support to the extent that the topic pertains to Ascentria's mission.

Advocacy does bring about action as evidenced by our efforts that helped secure \$12 million in Massachusetts and over \$200,000 in New Hampshire for Afghan resettlement in those respective states, as well as \$10 million in Massachusetts to support Ukrainian and other refugees.

You can support our advocacy by helping fund these initiatives and responding to action alerts as both actions are essential to the success of any advocacy efforts. Together, as a shared voice and collective action, we can bring about important change.



Marwa Alnaal, Director of Government Affairs

Priority topics:

- Workforce development related to direct care workers as well as advocating for an easier pathway to the workforce for migrants/refugees
- Refugee and immigrant rights within communities
- Federal earmark requests for capital expenditures in 2022
- Advocating for our staff within our senior care centers by initiating grassroots meetings and site visits of with the legislative representatives of that district.



From nothing to nursing - two lives on the way to success

Shauntel arrived at Ruth House with her daughter last September where she found housing in a safe, residential environment that builds individual strengths and help young families move toward self-sufficiency.

Karen Parkman, the program manager for the Young Parent Living Program at Ruth House, sang Shauntel's praise calling her "our inspiration and ideal resident." Shauntel very quickly mapped out her plan and started working at Bridgewater State Hospital as a case manager, picking up extra shifts to build her savings account that in turn allowed her to secure her own apartment in January. Shauntel continues to receive transitional coaching at Ruth House that helps her establish and pursue goals to master budgeting and move forward with her education for a career in nursing.

We caught up with Shauntel to talk with her about her future plans:

You've decided you want to pursue a career in nursing. What are your plans?

"Yes, I've been wanting to go to school for a while for nursing, but it was just too much. I didn't have a stable home and it was just too much to juggle everything at once so I dropped out of college and found this job where I am getting good experience and saving money. I'm going back to school, hopefully, in September for nursing if everything works out and if I can pay for it."

Have you begun to think about how you will pay for schooling?

"I'm going to try to apply for FAFSA (federal student aid) and then whatever else they won't pay for I'm going to try and see if I can work out a monthly payment plan."

What would it mean to you if you could access money from a scholarship fund?

"That would help a lot because school is very expensive and it's only one income for me. It would mean a lot because I really do want to go to school and pursue my education so that I can have a stable income to be able to provide for my kid."

Thank you to our major donor who provided a generous donation to our transition program, and to our recurring donors who have generously committed a monthly gift to support our scholarship fund for motivated youth in our programs.

Najma arrived from Somalia in 2016, joined our Unaccompanied Refugee Minors program and began her new life in Worcester, Mass. where one of our generous foster families opened their home to her. Najma speaks fondly of her foster family saying, "I will never forget how they helped me learn English and teach me about American culture. They are a big part of where I am today."

And where is Najma today? After attending Quinsigamond Community College and UMass Boston to earn her bachelors degree in biology, Najma moved to St. Louis, Mo. where she is studying to become a nurse. Kind donors funded her travel in 2020 through Ascentria's Diomande Scholarship Fund so that she could remain committed to her career pursuits. Speaking of the money she received Najma says, "Please keep donating because it is so important to someone like myself who had no one and nothing. All donations make a huge difference. Money should not be an obstacle to continuing education."

Set to graduate with her nursing degree in April 2023, Najma is looking forward to returning to Massachusetts where her friends live. We are proud of Najma's motivation and strength and applaud her accomplishments!



Donated Cars are Still Key after 25 Years

Good News Garage (GNG), a member of Ascentria, celebrated its 25th anniversary with an event at its Burlington, Vermont headquarters last October. Program staff, donors and clients listened to GNG founder Hal Colston and Vermont Senator Patrick Leahy speak about the importance of GNG's work. At that event, Colston awarded the organization's 5,500th donated car to a young, single mother. It was a highlight for GNG during a tough year for those struggling to move forward in their lives.

A national car shortage has put the brakes on vehicle donations. Thankfully, hundreds of generous New Englanders still turned to GNG to help them pass on their keys. These donors enabled us to put nearly 200 clients behind the wheel over the past year! After receiving the keys to a donated 2007 Toyota Matrix, GNG client Adeline Toney from Worcester, Mass. said, "Purchasing a car was out of my reach. Now, I'll be able to pursue my goals."

Another program operated by GNG, Ready To Go, continues to provide essential transportation services across Vermont and Massachusetts via on-demand shuttle rides. Ready To Go's team of 25 friendly drivers provided over 27,000 rides during the calendar year 2021! And during the early stages of the pandemic, these drivers delivered food to families in need!

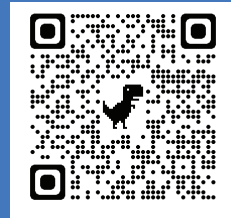
"While we can't solve the car shortage, we can certainly help some of those who are being hit the hardest," said Cash Cranson, Director of Operations at Good News Garage. "But we can't do it alone. During this difficult time, choosing to donate your car is an act of kindness and compassion that makes a tangible, immediate impact."



*Cash Cranson,
Director of
Operations at GNG*

Did you know that since the beginning of the Covid pandemic, a national car shortage has driven car prices to record highs? This has made it harder than ever for low-income individuals and families to afford reliable vehicles. Every day, GNG hears from more and more people who are looking for help to overcome their transportation struggles. It's safe to say that after 25 years of continuous service, GNG's mission has never been more important.

Pass your keys to a neighbor in need!



Scan the QR code with your cell phone camera or code reader to watch a video about Adeline's reaction to her donated car from GNG.

Senior Care

More room and amenities for our nursing centers!

Construction is underway at three of our skilled nursing centers in Massachusetts and Connecticut. These centers serve over 600 seniors and their families. Much of the work that we are undertaking is in response to new Massachusetts regulations put in place during the pandemic. The goal of these regulations is to de-densify the centers, which requires the conversion of three- and four-bedroom residences into private/semi-private living quarters. This work was completed at Presentation Rehabilitation and Skilled Care Center during the winter of 2021.

Of special note, in July 2021, Ascentria re-acquired Lutheran Rehabilitation and Skilled Care Center in Worcester. Ascentria had previously owned the Care Center for nearly 100 years prior to selling it in 2012. In May of this year, we hosted a groundbreaking ceremony for the construction of a 23-bed nursing building. This building will offer 11 private and six semi-private, fully furnished patient rooms, along with a designated nursing station, day room, and a beautiful new outside courtyard. With personalized amenities, along with clinical and rehabilitative programming, this new unit will allow the Care Center to meet the post-acute care expectations of the community and area hospitals that we serve. This new unit will also allow the Care Center to comply with the statewide bed de-densification requirement, while maintaining 150 licensed beds. This number includes 107 skilled nursing home beds plus the 43 rest home beds of the Center's Lillie Mansion.

At Lutheran Home of Southbury, we are conducting a full renovation of Parley Manor, the Home's over 100-year-old rest home. The resulting renovations will add private bathrooms to each of the resident rooms, 10 of which will have personal courtyard access directly off rooms.

Quaboag Rehabilitation and Skilled Nursing Center is also undergoing the de-densifying process, which includes the construction of two, small two-story additions. We will remodel the main entrance and will renovate the rooms and nursing stations in two of the Center's nursing units.

Chief Senior Care Officer Michelle Bettigole, RN, said, "These investments are evidence of our commitment to provide our frailest seniors with the highest level of care in the quality setting they deserve. We are thrilled to continue the Lutheran legacy of the skilled nursing centers in Worcester and Southbury, as well as building on the high-quality reputation of the other three Massachusetts facilities."



Lutheran Rehabilitation & Skilled Nursing Center



Lutheran Home of Southbury

In Recognition – Friends and Funders

We are grateful to donors who support our work at any level.

Benefactors (\$10,000+)

Bank of America Charitable Foundation
Angela and David Bovill
Mr. and Mrs. Edward A. Bucher
Estelle R. Dorau Trust
EOS Foundation
Greater Worcester Community Foundation
Mr. and Mrs. Garth H. Greimann
Hawk Foundation
Hoche-Scofield Foundation
Charles W. Holtzer Trust
Jesuits of Holy Cross College
Landry Family Foundation
Lincoln and Therese Filene Foundation
Lincoln Financial Foundation, Inc.
Lutheran Church of Framingham
Mr. and Mrs. Kevin D. McCarthy
Massachusetts Bar Foundation
Mount Olivet Evangelical Lutheran Church
New Hampshire Charitable Foundation
The Rutman Family
Estate of Vernal M. Schnabel
Sheehan Phinney
The Church of Jesus Christ of Latter-Day Saints
The Health Foundation of Central Massachusetts
The Shapiro Foundation
United Way of Central Massachusetts

Champions (\$5,000-\$9,999)

Ms. Laura Bagley
Mr. Daniel Beard
Bedford Presbyterian Church
Mr. Collin Beecroft
Mr. and Mrs. A. Richard Benashski
Mr. Jack E. Bickel
Mr. David Bijur
Marianne Boswell
Stephanie Cahoon
William Chase
Christ Lutheran Church
Mr. Michael Chubrich and Mrs. Donna P. Saunders
Community Foundation of Western Massachusetts
Karin DellAntonia
Faith Lutheran Church
Mr. and Mrs. David H. Gaylin
Good Shepherd Lutheran Church
Gale R. Guild
Habitzel Trust
Mr. Donald Hangen

Elizabeth Keating
Mr. Jeffrey P. Kinney and The Rev. Rebecca J. Bourret
Mr. and Mrs. Robert J. Ludwig
Ms. Anne Montgomery
Mr. J.F. Bart Nuboer and Ms. Janet Nuboer-Schmitz
Mr. and Mrs. Wayne Parrish
Project M25 Inc.
Farid Saadat
Sheehan Health Group, LLC
Lynn Summerhays
Mr. William F. Swanson and Ms. Lauren C. Payne
TD Charitable Foundation
Mr. and Mrs. Richard D. Walsh

Catalysts (\$2,500-\$4,999)

The Rev. and Mrs. Carl J. Anton
Ms. and Mr. Kelly M. Bartholomew
Berkshire Bank Foundation, Inc.
Ms. Evelyn Bonander
Mr. and Mrs. Kenneth Buntrock
Cheshire Lutheran Church
Mrs. Ruth E. Colson
Congregation B'nai Shalom
Country Bank
Mr. Edgar Domingo
Emmanuel Lutheran Church
Franklin Square House Foundation
Leopold Friedman & Ruth Friedman Foundation
Mr. Spencer Gold
George and Clarice Gordon
Mr. Dennis Hacker
Ms. Nancy Meegan
New England Synod, ELCA
NVIDIA
Mr. and Mrs. Patrick Peralta
Mr. and Mrs. Russell O. Pollard
Dr. Stanley and Mrs. Lois Reible
Rockland Trust Charitable Foundation
St. John Lutheran Church
Nancy Schrock
Mr. and Mrs. Elisabeth E. Shewmaker
The Baupost Group
Mr. Joel Vandixhorn

Innovators (\$1,000-\$2,499)

Mr. and Mrs. Michael J. Balinskas
Mr. and Mrs. Donald F. Ballas
Mr. Richard H. Barkalow
Bethany Lutheran Church
Bethlehem Lutheran Church
Ms. Amy Bollenbach

The Rev. and Mrs. Joseph E. Bourret
Vicki Boyd
Ms. Marcia Butzel
Ms. Aimee Cardwell
Nicholas Carter
Mr. Bruce A. Cerullo
Mr. James Chacharone
Suzanne Christensen
Church of Our Saviour
Community Church of Durham, UCC
Mr. and Mrs. Joel M. Cook
Lindsay Dearborn
Mr. and Mrs. David P. Desalvo
Mary Margaret Diehl
Mr. Kimm Dittrich
Mr. and Mrs. William J. Drapeau
J. Irving England and Jane L. England Charitable Trust
Enterprise Holdings Foundation
Mr. and Mrs. Lloyd Fark
Mr. and Mrs. Steven L. Feye
Finegold Alexander Architects Inc.
First Lutheran Church
Ms. Mary Fracchia
Mr. and Mrs. Jeffrey Fuhrer
Mrs. Catherine R. Gallagher
Dr. Zoe Gardner
Elizabeth Garvin
Gates Foundation
Mr. and Mrs. Ralph F. Gerenz
Anne Gifford
The Rev. and Mrs. Ross S. Goodman
Google
Dr. Judith A. Graeff
Mr. Sean Griffin
Mr. and Mrs. Richard B. Grove
Amy Guilford
Mr. and Mrs. Scott Hamilton
Mr. and Mrs. G. W. Hansen
Mr. Stephen Hardy
The Rev. Dr. and Mrs. Albert L. Haversat
Rita Heiferman
Hellmann Trust
Holy Trinity Lutheran Church
Intel Corporation
Mr. and Mrs. Kristian Jensen, III
Ms. Linda A. Johnson
Mrs. Susan Kane
Ms. April Kelly
Mr. and Mrs. Richard Kelton
Mr. and Mrs. Loren A. Korte
The Lazenby Family
Mr. Bruce Leibig
Ms. Madeline Leone
LexRAP
Mrs. Edith M. Lohr

Dr. Stacy Lundin and Ms. Jill Lundin
Lutheran Church of the Redeemer
McKinsey & Company
Mr. Ryan Miller
Ms. Brenda Murray
Mr. and Mrs. James A. Nail
Mr. David R. Nelson
Ms. Cheryl Newey
Dr. Susan M. Olson
Our Savior Lutheran Church
Eva Patalas
Judith and Thoru Pederson
Mrs. Laura Pelosi
Mr. Herbert S. Peterson
Gregory Pope
Ms. Diane Pritchett
Kendra D Rinas
Deborah Roberts
Mr. Philip Roberts and Mrs. Gail Weston-Roberts
Mr. Keith Robertson
David Ryder
St. Paul Evangelical Lutheran Church
St. Paul Housing Corporation
Pamela Schachter
Mr. and Mrs. Leonard Schiraldi
The Rev. Elizabeth Senft
Sisters of St. Joseph
Marc Sorel
Robert & Lynda Sorrenti
Barbara A. Steele
Scott & Ashley Taylor
Jennifer Tenczar
The Cookie Lady's Daughter LLC
The Hanover Insurance Group Foundation, Inc.
The Lutheran Church of St. Mark
Trinity Evangelical Lutheran Church of Chelmsford
Triumphant Cross Lutheran Church
The Rev. Carolyn V. Tryggestad and Mr. Reidar Tryggestad
Unitarian Universalist Church of Portsmouth, NH
United HealthCare Corp
Jacquelyn VanderBrug
Kimberley Vanderspek
Webster Five Foundation
Mr. Aaron Weitekamp
Wesley United Methodist Women
Mr. Bernard Whitmore
Mr. George E. Wilson
Mr. and Mrs. Herbert Woodward, Jr.

Opportunity Builders (\$500-\$999)

Ms. Ruth Agbaji
Ms. Katie Adams
All Saints' Church
All Saints' Episcopal Church
Mr. and Mrs. Robert E. Anderson
Arbella Insurance Foundation, Inc.
Arm in Arm

Ascension Lutheran Church
Ms. Pamela Bagley
Ms. Susan Bagley Koyle
Mr. Jeff Barrus
Mr. and Mrs. Todd Bergeron
Peter Bergh
Bruce Birren
Christine J. Black
The Rev. Donald E. Blume
David and Autumn Bouck
Margaret Braccio
Arthur D. Brennan
Ms. Mary Elizabeth Bridegam
Mr. Dean P. Briggs
Mr. and Mrs. Alfred L. Broz
Ms. Alexandra Burns
Jane Antoun Cartelli Rev Trust
Mrs. Teri Cavanagh
Ms. Linda C. Cheatham
Tiffiniy Cheng
The Rev. and Mrs. Lee S. Clark
Maureen Cleary
Margaret Coffin
Audrey Colson
Congregational Church of Harvard
Adam Craig
Federico Creatini
Mrs. Kateryna Cuddeback
Gary Cushing
Lisa Da Silva
Nema Daghbandan
Daughters of the Heart of Mary
Mr. and Mrs. Charles G. Davidson
Glen Dewar
Mr. and Mrs. James Dildine
Ms. Elizabeth Dionne
Robert Don Eckert
Marilyn Donnelly
Kurk Dorsey
Emanuel Lutheran Church
Ms. Sandra Enman
Nancy W. Evans
Ann and Lloyd Fark
First Congregational Church in Amherst
First Presbyterian Church
Mr. and Ms. Warner S. Fletcher
Mr. and Ms. Steven J. Frank
Ann Galli
Gabrielle Garschina-Bobrow
Ed and Gail Garvey
Ms. Jeanne Gaz
Ms. Susan Giroux
Mrs. Maureen Green-Stevens
Groce & Associates
Carter Hale
Tyrel Hansen
Mary A. Harada
Ms. Deborah Hardy
Mr. and Mrs. Paul and Nancy Haugsjaa

Ms. Diane Hayward
 Heartwood Nature School
 Mr. and Mrs. Ken High
 The Rev. Christian and The Rev. Tiffany Holleck
 Ms. Joanne S. Holman
 House of Prayer Lutheran Church
 Bill Ingraham
 Peter Izzo
 Mrs. Dawn C. Jackson
 Eleanor Janeway
 Ms. Nancy Jaysane
 Jeremiah Johnson
 Ms. Elizabeth Jones
 Deborah Karmozyn
 William Kath
 Julie Kath
 Ms. Pamela Kaul Gresty
 Joshua Kennedy-smith
 Robert Kepner
 Lisa Kerrigan
 Mr. and Mrs. David M. Kettner
 Ms. Crystal A. Komm
 Mr. and Mrs. Ed Kotowski
 Ms. Rosann M. Kozlowski
 The Rev. and Mrs. Richard Kremer
 Mr. and Mrs. David W. Kress, Jr.
 Mr. and Mrs. Raymond LeClair
 Mr. and Mrs. Rory MacLeod
 Ms. Carol Maloney
 Alexandra Martin
 Mr. Richard Mattson
 Mr. and Mrs. William Mayo
 Ms. Janice Mccullough
 Ms. Nadine MCGowan
 Dr. Carol McKeon
 Mr. Michael E. McPhee
 Deborah Merriam
 Mr. and Mrs. Mark G. Meyer
 Naomi Miller Stein
 Mom's Garage
 Daniel Moyer
 Ms. Pamela Mueller
 Mr. James V. Murphy
 Mr. and Mrs. Earl Nordbrock
 Linda Othote
 Ms. Wendy Paramore
 The Rev. Margaret G. Payne
 The Perry Family
 Bansany Pol
 Presbytery of Northern New England
 Matthew Probst
 Ms. Cristena Proffitt
 Mr. Joseph Z. Provo
 Joseph Provo
 Janice Radosevich
 The Ann and John de Raismes Charitable Fund
 Ms. Katherine Reisz-Hanson
 Mr. Stephen Revilak
 Mr. Mark G. Rinas

The Rinas Family
 Ms. Amy Rosenberg
 Mr. Harry A. Rothmann
 Mrs. Trudy Roybal and Mr. Steven Rowell
 Alham Saadat
 Jalal Saadat
 Ramin Saadat
 David Saff
 St. Francis Episcopal Church
 St. Gabriel's Episcopal Church
 St. Luke's Episcopal Church
 St. Michael's Parish
 St. Paul Evangelical Lutheran Church
 St. Paul Lutheran Church
 St. Stephen Lutheran Church
 St. Theresa Parish
 Beverly and Alden Sampson
 Marcia and Stephen Schloss
 Carol Sedewitz
 Mr. Mark Sellaw
 Vaughn J Sills
 Sarah Slavik
 Dick and Sue Snyder
 Ms. Rebecca Stevenson
 Joanna Swain
 Mr. Sam Swanson and Mrs. Joyce M. Gallimore
 Mrs. Anne Swanson
 Mr. and Mrs. Paul A. Terkelsen
 Nick Terzich
 The Church of Jesus Christ of Latter Day Saints
 Michael Thomas
 Unitarian Universalist Church of Concord
 Unitarian Universalist Church of Nantucket
 United Congregational Church-UCC
 United Way of Massachusetts Bay and Merrimack Valley, Inc.
 Mrs. Virginia and Mr. Alden Vaughan
 Mr. Joseph Veilleux
 Ms. Ann Victor
 VMware Foundation
 Diana Wainrib
 Rev. Karen L. Walker, Th.D.
 Amy Walsh
 Ms. Linda Ware
 Washington Congregational Church
 Water of Life Lutheran Church
 Ms. Rita P. Weathersby
 Mr. and Mrs. Robert Weaver
 WHEAT Community Connections
 Laura F White
 Mr. and Mrs. Peter M. Wild
 Holmes Wilson
 Jennifer Yamamoto
 Sharyn Zunz

Door Openers (\$250-\$499)
 Advent Lutheran Church
 Charles Allison
 Mr. and Mrs. Stephen Anderson

Mr. and Mrs. Charles G. Anderson, Jr.
 Ms. Jacqueline Atkinson
 Mr. Michael Auler
 Mrs. Trudy Roybal and Mr. Steven Rowell
 Ms. Anne Badzmierowski
 Mr. and Mrs. Albert L. Bandlow
 Lacey Bangs
 David Saff
 Tim Bernstein
 Mrs. Julia B. Blake
 Mr. Ernest A. Bormer
 Ms. Mariel K. Bossert
 Mr. Mark Bowser
 Thomas Brennan
 Dr. Janet T. Buerklin
 The Rev. Melissa C. Buono and Mr. John A. Buono
 Carol Cameron-Sears
 Mr. and Mrs. Jay B. and Carol Virshbo
 Laurel Case
 Yee-ching Chao
 Tina Cheng
 Christ Lutheran Church
 Coleman Research
 Ms. Irene Cornwall
 Mr. Ashish Cowlagi
 James Darr
 Ms. Laura Davies
 Ms. Mary Davies
 Mr. and Mrs. Alton P. Davis, Jr.
 Ms. Janet Denney
 Ameer Desjourdy
 Judith Durant
 Mr. and Mrs. James C. Engberg
 Ms. Elizabeth Engelhardt
 Ms. Danielle C. Ferdinand
 Ms. Rebecca Field
 First Lutheran Church
 FM Global Foundation
 Mr. and Mrs. David E. French
 Mr. Stephen Friedrich
 Greta Friel
 The Rev. Jeffrey Galbraith
 Sue George
 Patricia Goldman
 Lois Grant
 Theodore Groh
 Blaine J. Gross
 Mr. and Mrs. Paul Halstead
 Mr. Donald Harbert
 Mr. and Mrs. David Hardy
 Mr. Mathew Hardy
 Mr. Paul J. Hartung
 Dr. Elizabeth P. Hess
 Ms. Shirley M. Hollberg
 Ms. Mary Hoyer
 Joyce Huang
 Mr. Ronald J. Huppi
 Ion Bank Foundation
 Mr. Frederic Jenoure

Mr. and Mrs. Richard Johnson
 Mr. Thomas Kelsey
 Mr. Walter Koerting
 Mr. and Mrs. Ted Kremer
 Kim Kurak
 Ms. Katherine Laughman
 Amy Lee
 Legacy Insurance Brokers LLC
 Mr. Gerald Leonard
 Deborah Lewis
 Jean Lightman
 M Lynn Ritchie
 Mr. William Mahoney
 William Martin
 Mrs. Susan F. Martin
 Mr. Daniel Martinez
 Mr. and Mrs. Jack Mayo
 Beth Melo
 Ms. Nancy B. Meyers and Mr. L. John Meyers
 John Miller
 Millican Nurseries
 Miss Judith A. Moist
 The Rev. Dwaine and Beverlee Moon
 Carol Ann Moore
 Mr. Christopher D. Morris
 Mr. Scott A. Morrison
 Ms. Kristen Murphy
 Nauset Interfaith Association
 Mr. and Mrs. Carl Neal
 Ms. Betsey Neville
 Mr. Andrew Newman
 Northampton Friends Meeting
 The Rev. and Mrs. Louis G. Nuechterlein
 Donna E Palley
 Papergraphics Print & Copy, Inc.
 Ms. Margaret Potter
 Ms. Charlotte C Ramsay
 Mr. and Mrs. Edmund Reif, Jr.
 Mr. and Mrs. Ronald Riggert
 Seppo Rinne
 Mikael Rinne
 Ms. Anna Rizzo
 Mr. Douglas Romich and Ms. Patricia Tietbohl
 Catherine Rudolph
 St. Peter's Lutheran Church
 Cindy Schatz
 Anja Shafer
 Ms. Helen Shuster
 Mr. and Mrs. Paul G. Simoneau
 The Rev. and Mrs. Richard H. Skov
 Mr. and Mrs. Rick Slagle
 Sterling Democratic Town Committee
 The Rev. and Mrs. George D. Strohmeier, Jr.
 Timothy and Anne Swager
 Ms. Frances Howe Taylor
 Mr. and Mrs. Andrew Thompson
 Kelly and Michael Tzannes
 Mr. Alan Vail
 Dale Valena

John C Velis
 Pastor Arthur Vonau and Ms. Rosalind Vonau
 Wachusett Area Rotary Club
 Pamela Warren
 Mr. and Mrs. David C. Weber
 Dr. and Mrs. D B. Welling
 Binney K. Wells
 Wayne Wilkins
 Mr. Steve Wofsy and Mrs. Catherine Farrell
 Worcester Community Action Council
 Alec Wysoker
 Dr. and Mrs. Mark Yorra, M.D.
 Ms. Kimberly Young
 Ms. Nancy Zimmermann

Friends (up to \$249)

Freshta Abedi
 Annah Abrams
 Maryam Ahmad
 Zulfar Ahmadi
 Ms. Emily Aiken
 Ms. Alina Ainbinder
 Mr. and Mrs. Peter Ainsworth
 Miki Akimoto
 Mrs. and Mr. Sara R. Alcorn
 Ms. Lejla Alic
 Mical Allopenna
 Nancy Allred
 Alyse M. Allred
 Mr. Eric Alper
 Eva Alpert
 Ms. Alissa Alteri Shea
 Susan Amatangelo
 AmazonSmile Foundation
 Susan Amell LaFlamme
 Ranjith Anand
 Syam Anand
 Ms. Ellen A. Anderson
 Alden Anderson
 Mr. Donald Anderson
 Mrs. and Mr. Katherine Anderson
 Ms. Lynn Anderson-Lopez
 Anna Maria College
 Ms. Marguerite Ansley
 Rev. Alanna Antwerpen
 Argosy Publishing, Inc.
 Ms. Martha Armstrong
 D Arnie Arnesen
 Mr. and Mrs. Peter Arnold
 Cathy Arredondo
 Mary Artuso
 Mr. Richard Ashton
 Mrs. and Mr. Ann R. Asnes
 Mr. and Mrs. Richard Astle
 Ms. Barbara Atkins
 Ms. Kate Atkinson
 Ms. Rebecca Audet
 Ms. Ashley Babladelis

Lauren Backman Locke
 Beth Badik
 Mr. Eugene Badzey
 Ms. Carol L. Bagley
 Mr. Charles L. Bagnaschi
 Mr. Thomas Baird
 Ms. Deb Baker
 Ms. Dorothy Balamucki
 Mr. Jeffrey Balinskas
 Ms. Jill Balinski
 Margo Ball
 Ms. Audrey Ball
 Jessie Ballantine
 Nancer Ballard
 Mr. Dickson Bamfo
 Ms. Rachel Banderob
 Ms. Cynthia Banks
 Chrissa Banner
 Mr. and Mrs. Robert H. Banta, Jr.
 Joan Baptiste
 C. B. Barber
 Olivia Bare
 Chloe Barford
 Ms. Cynthia Barron
 Miss Alexandra Barrows
 Ms. Margaret Barsam
 Ms. Christine D Bartlett
 Ms. Sallie H. Barton
 Ms. Patricia Bass
 Ms. Edith P. Beach
 The Rev. and Mrs. Kenneth O. Bean
 Mr. Adam Beaudry
 J Beaugard
 Mr. and Mrs. Malcolm A. Beauvais
 Ms. Barbara Becker
 Jane A. Beebe
 Ms. Alexandra Beecroft
 Mr. Duncan Beecroft
 Ms. Susan Beers
 Ms. Judith Bendersky
 Kiranada Benjamin
 Mr. and Mrs. Peter H. Berenson
 Mr. and Mrs. Richard A. Bergemann
 Katrina Bernstein-Lewicke
 Mr. Thomas N. Berryman and Ms. Joan Ellersick
 Mr. and Mrs. John L. Berube
 Janet Marie Bessette Ivaska
 Ms. Margaret Carey Best
 Ms. Julie Bete
 Mr. Alain Bezahler
 Masooma Bhaiwala
 Ram C. Bhandari
 Ms. Ruth Bibace
 Elizabeth Bieri
 Michelle Bierschied
 Danielle Bing

Toni J. Biondo
 Mr. Michael Bird
 Ms. Sue E. Bisgaard
 Ms. Megan Bishoff
 Mr. Robert Bishop
 Reagan Bissonnette
 Elizabeth Bjorkman
 Ms. Rebecca Blackwell
 Sudie Blanchard
 Helen M. Blaschke
 Ilana Blatt-Eisgart
 Ms. Barbara A. Blue
 Ms. Gwen Blumberg
 Stephen Blunt
 Ms. Sarah Bodah
 Mrs. Brenda Bolash
 Mr. Philip J. Bolduc and Ms. Jennifer A. Reidy
 Ms. Helen G. Bonaceto
 Ms. Antoinetta Bonamico
 Ms. Natalie Bonamico
 Ms. Jessica Bond
 Ms. Lucille Booth
 The Rev. and Mrs. Andrew H. Borden
 Susan Born
 Samuel Borrello
 Ms. Margaret Barsam
 Mr. Frederick L. Bouchard
 Mr. and Mrs. Thomas W. Bourgoign
 Ms. Kristine M. Bourret and Mr. James Garofolo
 Stephanie Boutier
 Mr. Scott N. Boyle
 Elizabeth Bradshaw
 Mrs. Gillian Braley
 Daniel Branson
 Juliana Brazile
 Baird Bream
 Mr. and Mrs. John R. Breiland
 Roberta F Briggs
 Mr. Eric Britton
 Lea Britton
 Mr. Karl Broehm
 Jennifer Brown
 Emily Brown
 Lynn Brown
 Tara E. Browne
 Karen Bryant
 Stephen Buchwald
 Katie H Buckley
 Donielle Buie
 Elizabeth Burakowski
 Ms. Janalee Burbank
 Mr. Jefferson Burson
 Ms. Natalie Butler
 Kieran Byrnes
 Ryan Cabral
 Ms. Elaine Cacciola
 Tracy Cahill
 Timothy Cahill
 Elisabeth Cail

Regina Calcaterra
 Ms. Barbara C. Calhoun
 Douglas & Adele Calhoun
 Terri Calvert
 Michael Campbell
 Mr. David W. Canfield
 Jonathan Cannon
 Mrs. Dawna Cannon
 Mr. Jeffrey Canter
 Yi Cao
 Ms. Maureen Caplette
 Ms. Joan Caputo
 Ms. Kimberly Carlile
 Ms. Elizabeth Carnes-Flynn
 Christine C Carney
 Eileen Carney
 Mr. and Mrs. Sheldon Carp
 Ms. Jeannette Carr
 Leslie Carson
 Ms. Carmelina Carta
 Will Carter
 Ms. Jennifer E. Carter
 Lesli Cashin
 Kimberly Casper
 Ms. Bernadette Casserly
 Steph Cavender
 Ms. Erin Chamberlain
 Ms. Deborah F. Chambers
 R. Chandramouli
 Adam Chapman
 Kathleen Charpentier
 Ms. Arleen Chase
 Mrs. LingSe Chesnakas
 Fran Chickering
 William Chilton
 Lucinda R Chrislip
 Christ Episcopal Church
 Ms. Elizabeth Christensen
 Ms. Judith Chubb
 Church of our Saviour
 Ms. Helen Anne Cimikoski
 Lynn Clark
 Merlyn Clarke
 Mr. Nathan Clarke
 Mr. Matthew Clarke-Lauer
 Ms. Karen Clay
 Christopher Clocher
 Ms. Kathleen Clute
 Ms. Marlene Cockfield
 Sarah Cocuzzo
 Jacqueline Coe
 Ms. Julia Coelho
 Mr. and Mrs. Peter Coffin
 Ms. Anne Coleman
 Beth Collea
 Ms. Deborah A. Colony
 George H Colt
 Erica Colwell
 Mr. Wayne Comer

Helen Condell
 Mr. and Mrs. Christopher Condo
 Alison Condo
 Connie Condon
 Julie Connelly
 Ms. Judith B. Conner
 Maria Conroy
 Kate Constantino
 Ms. Alexandra Contosta
 Brendan Conuel
 Megan Conversano
 Mr. and Mrs. Stewart Cook
 Allison Cook
 Julie Cook
 Meredith Cooley
 Kirstin Coopridner
 Ms. Susan Copeland
 Ryan Cordell
 The Rev. and Mrs. John A. Corgan
 James Cosgrove
 Matthew Cote
 Jeanne Coughlin
 Ms. Nancy Cramer Webb
 Ms. Brenda L. Crane
 Mr. Cashmir Cranson
 Ms. Sarah Crary
 Ms. Margot Crawford
 Mr. Matthew Crawford
 Laura J Cressotti
 Mr. Sterling Crockett
 Ms. Jean Croll
 Ms. Marsha Culver
 Ms. Abby Cummings
 Christopher Cummins
 Ms. Vickie Curran
 Ms. Anna Currin
 Ellen Cushing
 Ms. Heather R. Dahle
 Ms. Barbara Daigle
 Claudia Damon
 Mr. Richard Dana
 Ms. Ann M. Dancik and Mr. Elpert Hodge
 Mrs. Joyce M. Danielson
 Thad Darger
 Abhi Das
 Mrs. June Davenport
 Makayla Davis
 Ms. Maryan Davis
 Ms. Janet Davis
 Susan Daws
 Ms. Sue Dawson
 Ms. Avril De La Cretaz
 Mr. Paschal DeBlasio and Ms. Jo-Ann Beaudin
 Beverly DeBruyn
 Matt Dellelo
 Ms. Alice M. DeLucia
 Patricia Demarco
 Ms. Linda Dembrow
 Kathleen Demers

Alice Dempsey
 James Densmore
 Mrs. Maureen Depp
 Ms. Susan Derber Webber
 Mr. Matthew Derman
 Ms. Denise Desrosiers
 Mrs. Pauline DeStefano
 Mr. and Mrs. David DeVore
 Ms. Jane Dewey
 Jane M Dewey
 Ms. Pamela Diaz-Rubin
 David DiBiasio
 Ms. AmberLee Dingess
 Ms. Cheryl D. Divito
 Ms. Sarah Dixon
 Terrence M Doeberl
 Ms. Jane Doherty
 Mrs. Brenda J. Donaghey
 Christian Donner
 Dorcas Mission Guild
 Ms. Nicole Dorn
 Deborra Doscher
 Mary P. Douglas
 Kara Dowal
 Ms. Tessa Dowling
 Barbara S. Downs
 Ethel Doyle
 Ms. Linda G. Dranchak
 Mrs. Nancy T. Dredge
 Mr. and Mrs. Donald Dregalla
 Mary Drummond
 Jennifer Ducharme
 Mr. Glen Ducharme
 Ms. Katharine Duderstadt
 Mr. and Mrs. Jonathan Duke
 Amy Duke
 Ms. Katherine Durand
 Ms. Pamela B. Durrant
 Ms. and Mr. Marlea M. Dutt
 Minda Dwyer
 Ms. Norma Jean Ebb
 S B. Eckhardt
 Ms. Coventry Edwards-Pitt and Mr. Matthew C. Weinzierl
 Rami Efal
 Ms. Jean Einstein
 Ms. Rachel Eisenberg
 Mrs. Lisa Eisenberg
 Marianne Eisenmann
 Charles Eisenmann
 Cynthia Elder
 Karim El-gamal
 Mr. Thomas Elliott
 Ms. Maria Emanuel
 Endowment Fund of the Evangelical Lutheran Church in America
 Jenna C Epple
 Nathaniel Erskine
 Mrs. Anita J. Erson

Miss Carol J. Esbig	Ms. Rachel Garber	Ms. Liz Hajek	The Rev. Lauren Holm and Mr. Joseph A.	Ms. Cheryl Joseph
Katherine Eshel	John Gau	Kevin Haley	Cleveland	Ms. Heidi Judge
Mohammad Eskandarinejad	Daniel Gaudet	Ms. Valerie A. Hall	Mr. and Mrs. Stephen V. Holmes	Mrs. Virginia Justicz
Caroline Estey King	Ms. Mary Gauvain	Ms. Gail M Hall	Ms. Katherine Holmes	Mr. Matt Juszcak
Ms. Rachel Evans	Ms. Samantha Gauvain	Philip J. Hallee	Holy Trinity Lutheran Church	Dr. Debbie Kaegebein
Ms. Judith A. Evans	Rev. Kathleen Geagan	Ellen Hallett	Kory Home	Hari Kamadurai
Mary A. Eweka	Ms. Jaqueline Geoghegan	Rebecca Hallock	Ms. Lori Hong	Vandana Kamath
ExaGrid Systems	Mr. and Mrs. John Gergely	Ms. Susan Halpin	Mary Eileen Hood	Ashish Kamra
Elizabeth Exton	Kathleen Gerwatoski	jacqueline Hamilton	Kerry Hopkin	Mr. and Mrs. Timothy D. Kane
Dr. Nisha Fahey	Ms. Helen G. Gettelman	Hanover Insurance Group	Mr. Sean Horgan	Miss Dorothy H. Kapinos
Mr. John Faith	Zohal Ghiaszada	Wendy Hansen	Ms. Michele Horne	Kristin Kaplan
Ms. Liz Fancher	Peter Gibson	Todd Hanson	Ms. Monalisa Hota	Ms. Jessica Karmen
Ms. Mary Farrell	Robert Giegengack	Mary Happ	Leslie A. Howard	Frances E. Karttunen
Ms. Joan Fauth	Joan K. Gigstad	Ellen Harasimowicz	Ms. Suzanne Howatt	Dorothy Kasik
Marsha Feder	Renata Gilarova	Joshua Hardy	Ms. Rochelle A. Howe	Ms. Jacqueline Katz
Ms. Marilyn Feinberg	Mr. Jonathan Gilbert	Aly Harney	Sue Howell	Amanda Kedaigle
Eileen R. Feldman	Ms. Laura-jean Gilbert	Elizabeth B Harper	Ms. Patricia Hughes	Ms. Amy Keesee
Mrs. Katharine D. Fennelly	Pamela Gilday	Ms. Sarah Harrison	Ms. Linda C. Huls	Robin Keisling
Mr. and Mrs. Edward Ferguson	Mr. Myron Gildesgame	Mr. and Mrs. Gary L. Harting	Mr. William Hunt	Mr. Thomas Kelemen
Mr. Joshua H. Ferris	Mr. and Mrs. Brian A. Giles	Mrs. Barbara Hartshorn	Mr. Richard Hunter	Deborah Kemp
Ms. Wendy Festerling	Ms. Joan G. Gilmore	Jan Hatch	Kirsten Hunter	Adrian Kendall
Mrs. Anneliese H. Fidler	Ms. Eve Gilmore	Mr. John B. Hatch	The Rev. and Mrs. Richard A. Hurst, Sr.	Sanford Kendall
Mr. Thomas Field	Mrs. Caryl J. Gilson and Kenneth G. Gilson	Mr. Michael Havery	Yousuf Hussain	Constance Kennedy
First Baptist Church	Girl Scouts of Central and Western Mass Troop	Mr. Derek Hawes	Ryan Hvizda	Elizabeth Kenny
Dr. David Fish	11649	Ms. Libby Hawkins	Ms. Kelly Hydrick	Khamphady Keovongsa
Mr. and Mrs. Dean W. Fisher	Lynn A. Girtton	Mr. and Mrs. William H. Hayes	Ms. Joan Ilg	Ms. Alice Kern and Shem Krey
Ms. Leora Fishman	Ms. Wendy Giunta	Ms. Maggie Hayes	Ms. Elaine Indomenico	Barbara Keshen
Ms. Sunshine S. Fisk	Mr. Charles A. Glick	Anne Hayes	Mr. Terry Irwin and Cynthia Irwin	Emily Ketchum
Jessica Fitts	David Godolphin	Robert Hayes	Ms. Rachael Ivson	Ms. Laura Ketteringham
Ms. Marie Fitzpatrick	Russell Goettel	Ms. Cheryl Hayes-Farrell	Ganapathy Subramanian Iyer	Steven L. Kidder
Ms. Karen Flatley	Ms. Megan Golding	Ms. Lindsey Healey	Mr. Alexander Jackson	Ms. Lois Kilberg
Jenessa Flores	Phyllis Goldman	Erin Heaps	The Rev. Ronald E. Jackson	Mr. Michael Kilian and Mrs. Valerie Hurley
Ms. Heather Floyd	Ms. Deanna Goldner	Mr. Craig Hefner	Suzanne Jacobs	Ms. Mary K. King
Ms. Linda Floyd	Ms. Sandra R. Goldstein	Jim Hegarty	The Rev. and Mrs. Otto W. Jacobson	Ms. Nancy E. King
Mr. David L. Flynn	Mr. Raymond J. Goodman	Ms. Elizabeth Heichler	Ms. Julie James	Ms. Alison King
Ms. Mary Flynn	Lorry Goodson	Ms. Theodora Hein	Mark Jandreski	Mr. Richard King
Judith Foard-Giucastro	Laura B Goodwin	Mr. Jeffrey Held	Ms. Dorothy Janke	Ms. Beverly Kinney
Margaret Fogarty	Julie Gordon	The Rev. and Mrs. Phyllis R. B. Helfrich	Danielle C Jensen	Ms. Samuel Kinney
Nancy Foley	Anne Gordon Lorentzen	Joanne Helhowski	Ms. Michelle Jeppesen	Ms. Maridee Kirwin
Alana Folsom	Lisa Gorgas	Mr. David Helsel	Ms. Tracy Jesson	Mr. Sebastian Kiss
Ms. Andrea Folsom	Ms. Jennifer Gorman	Brodie Henry	Yu Ji	Mr. Paul S. Kittel
Suzanne Fong	Ms. Elise Gorseth	Vera Hernandez Holmes	Mr. Lucas Jindrich	Danielle Klainberg
Ms. Sarah Fontaine-Lipke	Ms. Patricia Gray	Ms. Natalia A. Hesse	Mr. Margaret Johnson	Ms. Abigail Klingbeil
Ms. Cynthia Forcier	Ruth Ann Graybill	Mary E. Hettinger	Jillian Johnson	Ms. Bernice Knappen
Sarah Forney	Joyce M Greenleaf	Madeleine Hickman	Ms. Carlene A. Johnson	Mr. and Mrs. David J. Knowlton
Diane Foster	Jill Greenlee	Ms. Theresa Hicks	Mr. William Johnson	Mr. Philip Knudson
James Fowler	Mr. and Mrs. William G. Gregory, Jr.	Caterina F Hill	Tom Johnson	The Rev. and Mrs. Stanley H. Knull
Ms. Karen D. Frank	Mr. Daniel Gregory	James Hilt	Mrs. Mary H. Johnston	Mr. and Mrs. Earl J. Koester
Ms. Rene Frayman	James L. Griffin	Carl Hilton VanOsdall	Ms. Paige Johnston	Alexander Konrad
Ms. Pamela Frederick	Ms. Betty Grondin-Jose	Ms. Susan Hirsh	Ms. Jennifer Johnston	Mr. Ronald Kraatz
Harriet Friedrich	Melany Gronski	Nancy Hirshberg	Herbert Johnston	Ms. Annette Krakowsky
Gilbert W. Fry	Jeffrey Grover	Ms. Stephanie Hirtle	Mrs. Siiri Jonasch	Mr. and Mrs. Paul Krause
Mr. Larry L. Funck	David Grubman	Ms. Beverly E. Hjorth	Mr. and Mrs. Eric C. Jones	Mr. Stephen Krupa
Mr. Phineas Gadd	Mr. Kevin and Mrs. Shawn Grunwald	Ms. Helena Ho	Mr. Harold Jones, III	Ms. Heather Kuhn
Ms. Julianne Gadoury	Ms. Johanna E. Gunther	Mr. and Mrs. Richard Hoeker	Ms. Valerie Jones	Caitlin Kupsc
Ms. Tiffany Gagnon	Mr. Robert Gustin	Ira and Dorothy Hoffman Trust of 2014	Ms. Ann R. Jones	Mrs. Catherine L. Kyle
Mrs. Elaine Gall	Ms. Kelsey Haberman	Mariana Hohn	Ms. Tammy L. Jordan	Kathryn M LaBonte
Neal Gandhi	Erich Haberman	Mrs. Katherine K. Holcomb	Mr. Harmon Jordan	Mr. David Lacey
Mrs. Kriston Ganguli	Joan Hadly	Mr. and Mrs. Tom Hollister	Kyle Jordan Brown	Mrs. Belinda Ladutko

Balaji Lakshminarayanan	Ms. Janice Machado	Ms. Virginia Mierins	Ms. Eleanor Norton	Ms. Portia Plumb Thompson
Jennifer Lambert	Ms. Jennifer Madson	John Migliarini	Mr. Richard S. O'Brien	Ms. Liza Poinier
Lamoureux Pagano Associates - Architects	Nancy M. Mahler Foster	Carl M. Mikkelsen and Barbara R. Posnick	Ms. Melissa O'Brien	Andy Pond
Mr. Michael Lankarge	Jason Mahoney	Ms. Magdalene Miller	John O'Connor	Bernard Poppe
Ms. Jane Lannon	Laura Malek	Charles Miller	Ms. Donna Odde	Ms. Katherine Porter
Dan Lasko	Ms. Sarah Mamlet	Megan Miller	Ms. Margaret A. Ofiero	Mr. Christopher D. Porter
Deborah Lawler	Mr. Ed Mangiafico	Ms. Cheryl Miller	Molly O'Gorman	Janet Porter
Kathy Le	Jennifer Mansfield	Theresa Milstein	Miho Okada	Mr. Louis Postel
Mr. Geoffrey Lea	Mr. Wallace T. Many	Ms. Barbara Miramant	James O'Leary	Clancey Potter
Michael and Peter Leare	Mrs. Susan March and Mr. Thomas V. March	Siddharth Mishra Sharma	Nancy J. Olins	Ms. Marianne M. Power
Kate Leary	Roger Mark	Perry Mixer	Mr. Alen Omerbegovic	Mr. and Mrs. Thomas H. Pregman
Carolyn Leary	Ms. Marianne Marrone	Lolly Mixer	Ms. Caitlin O'Neil-Amaral	Ms. Caitlin Price
Deborah A. Leavitt	Beverly Marshall	Mr. Ryan Mohamed	Lynne C Orsted	Ruthann Prifty
Miriam Lebby	Mr. and Mrs. John E. Marthinsen	The Rev. and Mrs. Charles R. Moline	Hank and Tracey Osborne	Dan Primack
Naomi LeBlanc	Cris Martin	Ms. Jennifer Molz	Susan and C.R. Ostberg	Ms. Judith Proctor
Ms. Gail A. LeBlanc	Mass. Mutual Life Ins. Co.	Ms. Rosemary Monahan	Sam Ostrow	Laura Protzman
Mr. Kenneth LeBlond	Ms. Carolyn M. Mase	Judy Monell	Marcy & Matthew Ostrow	Melissa and Bill Pucci
Ms. Marie LeClerc	Jennifer Matoney	Chaffee Monell	Sayuri Owens	Daniel Purtell
Michael Lefemine	Edith Maxwell	Carley Monell	Mr. Paul Oxley and Mrs. Amanda Luyster	Mrs. Jennifer Querbes
Martha Leibs	Ms. Susan Mayer	Ms. Sandra Montminy	Athma A. Pai	Ms. Natalie Quinn
Ms. Myrtle Leighton	Toshia McCabe	Sara Moore	Ms. Elisa J Painten	Peter Quirk
John Lein	Ms. Teresia Mccarthy	Ms. Laura Moran	Mr. and Mrs. Daniel Palant	John Radosevich
Ms. Margaret LeRoux	Betsy McCarthy	Jane Morgan	Ms. Lucy Pallazola	Susan Ramsdell
Pam Lessard	Sharon McCarthy	Ms. Ann M. Morin	Eleanor Palmer	Mark Ranauro
Katherine Leswing	Maureen Mccarty	Vanessa Moroney	Jonathan Palmer	Mr. Angelo W. Ranno
Oanh Letter	Donna McCay	Mr. Kristopher Morrill	Mr. Stephen Parent	The Rausch Family
Nathaniel Leung	Melanie and Broc McCune	Mr. Sean Morrison	Alexander A. Parent	Ms. Donna Raycraft
Ben Levitan	Ms. Kelly Mcdermott	Ms. Joyce Morrissey	Robert Parker	Amir Razai
Aron Levy	Megan McDermott	E. Morton	Ms. Pamela E. Parker	Redeemer Church Women
Charles Lewis	Ms. Elizabeth McGonagle	Morgan Mosher	Ms. Nancy M. Parland	Mr. Kevin Redman
Jane Lewis-Raymond	David D. McKinley	The Rev. Eliot Moss	Michael Paul	Elizabeth C Reisz
Lexington High School	Ms. Carrie Mckinnon	Ms. Zoe Moutsos	Ms. Christine Paustian	Amanda Restell
Noel Li	Ms. Susan McLane	Pam Mueller	Ms. Elaine Peabody	The Rev. Walter H. Reuning
Mr. Jacob Lloyd	Mr. and Mrs. Robert McLaughlin	Subrata Mukherjee	Mr. Keith Peabody	Nicholas Reville
Ms. Nancy R. Lobdell	Ms. Jennifer McMullin	Wendy M Mulcahy	Mr. and Mrs. Richard V. Peace	Willaim C. Reynolds
Alexandra Lockwood	Ms. Rita F. McNamara	Jeffrey A Munroe	Ms. Julia Pearson	Mr. Edward Reynolds
David Loehwing	Ms. Kate Mcpherson	Ms. Darylne A. Murawski	Mr. and Mrs. J. Richard Pearson	Mr. and Mrs. Peter H. Richards
Ms. Judith Loftus	Lynne McSheehy	Ms. Phyllis Myung	Maureen Pellegrini	Ms. Theresa Riel
Corie Lok	Colleen McSweeney	The Rev. Susan E. Nagle and Mr. Andrew Nagle	Mr. and Mrs. John M. Pelose	Mr. Sean Rielly
Mrs. MaryAnn Look	Ms. Elizabeth Meadow	Disha Narayanan	Ms. Anna L. Penner	Kirsti Rinne
Dylan Louviaux	Ralph Medbery	Dr. and Mrs. Joseph A. Nazzaro	Mrs. Kristina M. Peralta	Mr. Rex Ritchie
Julie Lowry	Ms. Margaret Meehan	Mr. David Neary	Mr. and Mrs. Armand B. Perlman	Heidi Ritter
Mr. Andrew Lu	Frances Meffen	Mr. Kenneth A. Nelsen	Denise Perron	James and Suzanne Rivers
Elizabeth Lu	Joanne Megna-Wallace	Ms. Brenda C. Nelson	Rose Persichetti	Mrs. Diane M. Rivers and Mr. Donald F. Rivers
Ms. Carol Luddecke	Mrs. Susan Meier	Taylor Nelson	Marsha Petaja	Mr. Terrance Roach
Veronica Ludensky	Mr. and Mrs. Kenneth H. Meinelt	Ms. Christine Nelson	Joshua Peter	Judy Roberts
Ms. Nancy G. Ludewig	Ms. Corrin Meise-Munns	Mr. Glen Nelson	Mr. Aticus Peterson	Bradford Roberts
Mr. and Mrs. John P. Ludwig	Ms. Priscilla Melendez	Cheryl Nelson	Ms. Veronica Peterson	Ms. Amanda Robertson
Venus Luong	Ms. Donna Mellen	Orlyn Nelson	Ms. Patricia Petrin	Ms. Lori Robertson-Stoudt
Ms. Stacey Luster	Hyla and Robert Melnick	Ms. Elyse N. Nelson Winger	Ms. Doris Pfaffinger	Sonja Robinson
Mr. and Mrs. Kris Lutz	Rachel Merrill	Santosh Nepal	Brian Pfitzer	Ms. Ellis Robinson
Chrissa Luzung	Rachel L Merrill	Ms. Anna Nerenberg	Ms. Francine C Philippe	Ms. Beverly Rodrigues
Ms. Leslie A. MacAfee	Ms. Sara Metheany	Ms. Barbara Neustadt	Mr. Matthew Phillips	Ms. Helen Rogalsky
Mr. and Mrs. Roderick A. MacDonald	Ms. Mary J. Metzger	Dr. Peter Newburger	Ms. Lisa Piering	Yanil Rojas
Ms. Ann C. MacFate	Joseph Meyer	Ms. Joanne Newman	Amrit Pilo	Mr. William R. Roop, III
Ms. Joanna Macgugan	Stephanie Meyers	Thienhuu Nguyen	Peter Pinch	Diane Root
	Ms. Janna Michael	Mark Nilson	Ms. Ruth Martin Pisarcik	Ms. Maureen Rose
	Ms. Victoria Mickelson	Benazeer Noorani	Dr. Daniel Plante	Ms. Janice Rosenberg
	Mr. and Mrs. Robert Middleton	Melanie North	Ms. Sarah Plantinga	Ms. Rachel Rosenblum

Mr. David Ross
 Ms. Stephanie Ross
 Mr. Robert A. Ross
 Ms. Holly Rossi
 Alessandra Rotunno
 Ms. Clarissa Rowe
 Kate Roy
 Mathew Roy
 Ms. Elizabeth Ruark
 Ms. Amy Rubin
 Donna E Rudek
 Amanda Ruggles
 Barbara J. Ruhe
 Lauren Ruiz Bloise
 Mr. and Mrs. William R. Rummler
 Carolyn R. Russell
 Mr. William D. Russiello
 Jennifer Rutley
 Michael Ryan
 Gwendolyn Ryan
 Amelia J. Ryer
 Kobe S.
 Michael L. Sabolinski
 Maureen Sabolinski
 Jayne Sabolinski
 Laurie Sachs
 Dorota Sadowicz
 St. Mary Parish Hillsborough NH
 St. Paul Evangelical Lutheran Church
 St. Paul's Episcopal Church
 Linda Sajjad
 The Rev. and Mrs. Edward B. Saling
 Mr. James Sallinger
 Ms. Kimberly Salmon
 Mr. Mark Salvatore
 Mr. and Mrs. Michael P. Salvatore
 Preethi Sambamoorthy
 Eileen Samberg
 Judy A. Sampson
 Miss Kendra Sandford
 Judith Sandler
 Ms. Sue Sanfacon
 The Rev. and Mrs. Paul H. Santmire
 Ms. Mary Sarkis
 Ms. Bernice Scata
 Deborah Schachter
 Ms. Barbara A. Schauer
 Jessica Scheick
 Mr. and Mrs. Werner Schirmer
 Ms. Pamela Schmidt
 Mr. and Mrs. Peter Schmidt
 Matthew Schmitz
 Robin H. Schnell
 Ms. Kim A. Schnell
 Ms. Jill Schock
 Ms. Laura Schoerning
 Mr. and Mrs. Richard A. Schrenker
 Ms. Daphne Schwab
 Erin Scott Daly

Ms. Carol Seager
 Ms. Autumn Seals
 Ms. Natasha Seaman
 Ms. Deb Seavey
 Ms. Susan M. Secco
 Dan Seligson
 Mr. and Mrs. Joseph B. Selva
 Namrata Sengupta
 Ms. Amy Serr
 Janice Severance
 Mr. and Mrs. Patrick Sexton
 Hridhaan Shah
 Shaili Shah
 Farzana Shaik
 Khalid Shakir
 Katherine Shao
 Lois Shea
 Rev. Marguerite M. Sheehan
 William Sheerin
 Mrs. Charles Sherman
 Annie Sherry
 Erik Shipley
 Joel Shirk
 Matthew Shorey
 Mr. Jeremy Shulkin
 Ms. Natalia Sidorkina
 Emily Sienkiewicz
 Mr. George Z. Sigel
 Ms. Lynn Signer
 Andrew and Judith Silinsh
 Ms. Elissa Simard
 Ms. Joyce Simon
 Ms. and Mr. Jill Sinclair
 Vedula Sitaram
 Mary Skorczeski
 Mr. Kenneth Slaughter
 Ms. Julie Smiley
 Ruth Smith
 Ms. Marjorie Smith
 Jeanette R. Smolnik
 Bailey Snyder
 Mr. Gary Snyder
 Ms. Lauren Solomon
 Steven Solomon
 Katie and Tom Solter
 Rajeev Soneja
 Eliot & Christiane Sorel
 Mr. Tyler Sorenson
 Austin Sorette
 Linda Southall
 Andrew Southcott
 Mr. Anton Spaans
 Molly Sperduto
 Sreenath Sreenivasan
 Rohit Sridhar
 Gregory Stanley
 Mr. Germaine T. Staples
 Mr. and Mrs. Kenneth J. Stark
 Ms. Susan H. Stayman

Antonia H. Stechler
 Mr. Joseph Stefano
 Adam Stefek
 Ms. Jane Stenning
 Dr. Miganush Stepanians
 Ms. Carrie Stevens
 Mr. William J. Stevens
 Ms. Suzanne Stinson
 Cynthia Stoldt
 Mr. and Mrs. Chester W. Stott
 Ms. Greta Stromberg
 Stop & Shop
 Ms. Margaret A. Studier
 Ms. Cheryl Studley-Straut
 Koduvayur Subbalakshmi
 Daniel Suess
 Ms. Julia Sullivan
 Mr. James Sullivan
 Tabinda Sultan
 Courtney Sundell
 Maria Sundquist
 Jennifer Susse
 Lisa Sussman
 Mr. and Mrs. Robert Swain
 James Swan
 Ms. Denise Swartzendruber
 Margaret and Kevin Sweeney
 Ms. Zoe Sweet
 Lakshmi Tadepalli
 Mr. Chris Talmage
 Donna and David Talman
 Ms. Alyson Tanguay
 Arlene Taranow
 Leyla Tarhan
 Nadia Tase
 Ms. Marjorie Tauer
 Taunton Press
 Ms. Judy P. Taylor
 Mr. Richard Taylor
 Carol Taylor
 Christine Teague
 Ms. Elizabeth Tener
 Catherine Terwedow
 Coe W. Tewksbury
 Mrs. Jane Theuner
 Charles W. Thomas
 Anna Thompson
 The Rev. and Mrs. Jay M. Tichenor
 Shera Tignor
 Nancy and John Todor
 Mr. Tyler Toepke-Floyd
 Mr. Martin Toepke-Floyd
 Mr. and Mrs. Richard Topping
 Julie Torrisi
 Joan Toye
 Roberta Trahan
 Training, Marketing & Technology, Inc.
 Mr. and Mrs. Janet R Trask
 Ms. Ellen Tratt

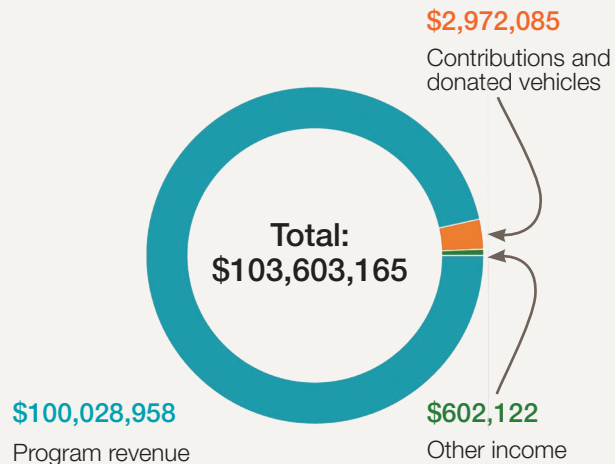
Anne Tremblay
 Mr. Frank Tringali
 Ms. Karen Tripmacher
 Ms. Mary Truong
 Joge J. J Tsang
 Natalie Tur
 Ms. Hillary Turkewitz
 Geraldine Turner
 Mr. John Turner
 Nora Tuthill
 Lourdes Ulloa
 Unitarian Universalist Meeting House
 Sara Urbano
 Dr. Jwalant K. Vadalia, MD
 Ms. Julie Vakoc
 Ms. Patricia Vallecillo
 Russen Van Adzin
 Mr. Mark Vanderwerf
 Mr. Mark Vargo
 Nancy Vawter
 Mr. Gabriel Vazquez
 Birute Vazquez
 Mr. Gabriel R. Venegas
 Vertex Pharmaceuticals
 Ms. Ursula Vesty
 Margaret Viau
 Mr. and Mrs. Brad C. Voelz
 Susanna Von Oettingen
 Ms. Donna Vuilleumier
 Mr. Richard M. Wachterman
 Mrs. Elene and Mr. Jerry Wacks
 Carol Waddoups
 Mr. and Mrs. William A. Wade
 Rosetta Waichigo
 Ms. Priscilla Waite
 Ms. Jessica Waite
 Mr. and Mrs. Robert J. Walker, Jr.
 Kathryn D. Wallace Toohey
 Mr. and Mrs. Arnold Wallas
 Mary Walsh
 Ms. Mimi Wan
 Meredith Ward
 Terence Wardrop
 Mr. Lawrence Warfield
 Brian Warmoth
 Peter Warren
 Ms. Norma Wasserman
 Shaina Wasserman
 Annette Watson
 Stephen Watt
 Sister Carol M. M. Weaver
 Ms. Jennifer Weaver
 Mr. Christopher Webb
 Ms. Laura A. Weickert
 Ms. Sherry Weitzen
 Tina Wells
 Stephanie Wencil
 Alison Wendlandt
 Ms. Deborah Wenger

Gerald Wheaton
 Margaret White
 Mr. and Mrs. John L. Whitlock
 Krystal Whitmore
 Brooklyn Whittier
 Bret Wilcox
 Daniel Wilfrid
 Alexander Wilhelm
 Jody Wilhelm
 Ms. Constance Wilkins
 Nancy Wilkinson
 Mr. and Mrs. James M. Willey
 James Willis
 Laura Willis
 Mr. James N. Willis
 Willis Towers Watson US LLC
 Ms. Rebecca Wilsker
 Ms. Susan Winslow
 The Rev. Dr. and Mrs. Adolph H. Wismar, Jr.
 Thomas Witkowski
 David H Woessner
 Cate Woolner
 Ms. Cynthia Worthington Berry
 Gloria P. Wraight
 Ms. Katherine Wright
 Mr. Matthew Wroblewski
 Melissa Yackels
 Alka Yadav-Mehta
 Yunho Yang
 Lija Yang
 Jonathan Yeo
 Rosemarie Yevich
 Mr. and Mrs. Thomas R. Yocom
 Mr. Leonard Yost
 Ms. Mary Jane Young and Mr. Richard Young
 Jack Yu
 Mark Yudilevich
 Dr. Neal S. Yudkoff and Dr. Judith S. Post
 Ms. Christine Yuen
 Dr. Nataliya Yufa
 Tamim Yusuf
 Walter Zagieboylo Jr
 Emily Zeien
 Lauren Zembron
 Victor Zhao
 Julie and Van Zimmer
 Sherry Zitter
 Shantar Zuidema

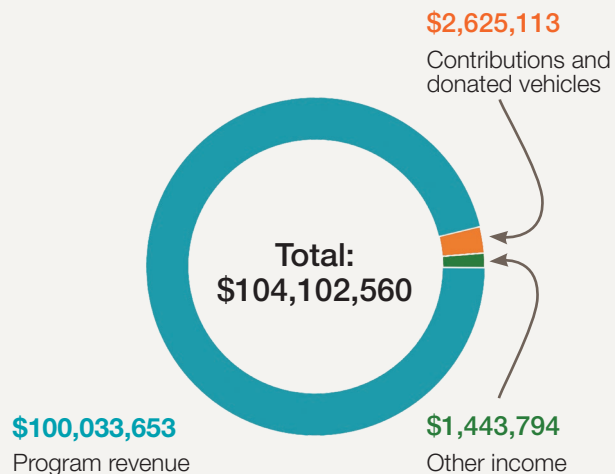
By the Numbers – FY 2021 Financial Highlights

Source of Funds

FY 2021



FY 2020



Total revenue

FY2021	\$106M
FY2020	\$104.3M

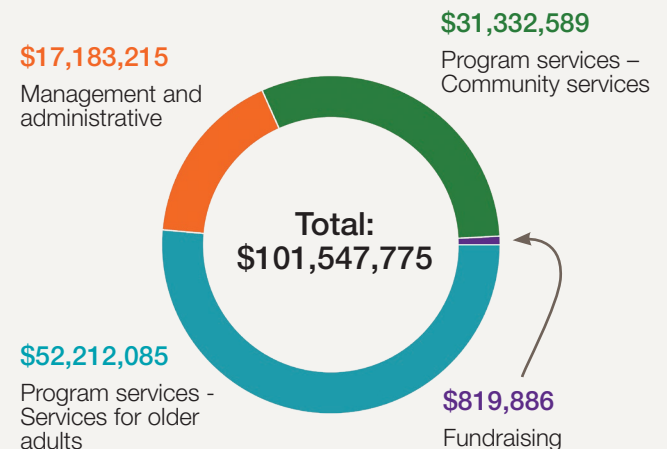
Total net assets

FY2021	\$21.2M
FY2020	\$13M

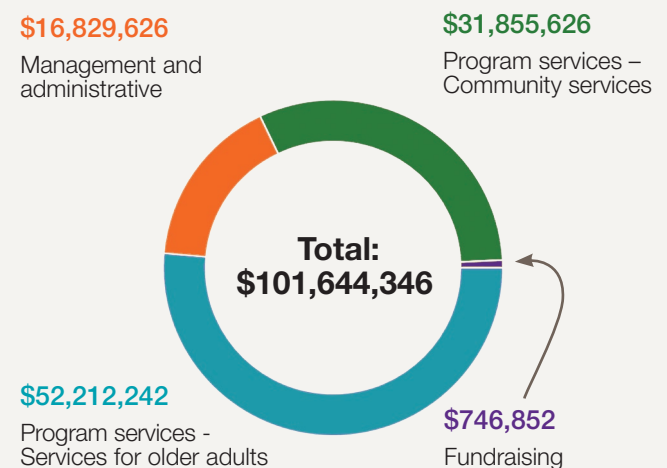
The audited financial statements of Ascentria Care Alliance represent the activity of the parent organization and its wholly owned subsidiaries.

Use of Funds

FY 2021



FY 2020



FY 2021 Program Highlights

600+ seniors served in our six Mass. and Conn. facilities offering independent living, congregate living, assisted living, and skilled nursing/short-term rehabilitation care.

100+ individuals with a Developmental Disability and/or Autism Spectrum Disorder were provided supports in Massachusetts to maintain independence and thrive in their communities.

257 clients served by our 174 Maine staff. This included clients with mental illness and developmental disabilities in both in-home and residential settings.

1,075 SNAP-Ed clients received 195 hours of food/nutrition and access education; 788 home gardening kits and 500 seedlings distributed to West Springfield public school students and program partners.

11 URM/DCS licensed foster homes for our 170 Unaccompanied Refugee Minors (URM) and 31 DCS foster care clients. In 2021 we had 24 graduates: 18 URM are high school/HiSET graduates, three obtained vocational certificates, one earned an associate degree and two earned bachelor's degrees.

42 young mothers and their children supported through our residential Young Parent Living Programs, Ruth House and Florence House. Of these, nine families were able to move into their own apartments and 10 moved in with family or friends during 2021.

600 refugees resettled in MA and NH by our Services for New Americans program.

900+ clients represented by our Immigration Legal Assistance Program, including asylum clients, unaccompanied minors and survivors of violence, human trafficking and child abuse.

183 vehicles awarded to New England families through our Good News Garage program. To date, more than 5,500 reliable vehicles have been placed with families in need.

36,432 rides scheduled through our Ready To Go program in VT and MA. Ready To Go provides rides for clients to access essential life activities, including jobs, training and childcare.

321,066 hours of In-Home Care services delivered by approximately 300 personal care service providers to 555 clients ages 19 to 99.

40,443 interpretation appointments filled by 245 interpreters speaking 55 languages through our Language Bank program.

60 youth served in our foster care programs. 49 foster homes were collectively licensed and opened to care for youth in New Hampshire and Massachusetts.

Board of Directors and Senior Leadership

Officers

William Mayo, *Chair*

Fred Jenoure, *Vice Chair*

Karen Gaylin, *Secretary*

Garth Greimann, *Financial Secretary*

Angela Bovill, *President and CEO*

Directors

Alex Bartholomew

Ashish Cowlagi

Scott Hamilton

The Rev. Ross Goodman

Stacey Luster, J.D.

Keith Robertson

Barbara Ruhe

Peter Schmidt

Executive Leadership

Angela Bovill, *President and CEO*

Michelle Bettigole, *Chief Senior Care Officer*

April Kelly, *Chief of Staff*

Jeffrey Kinney, *Chief of Strategic Development*

Nancy Meegan, *Chief Human Resources Officer*

Aimee Mitchell, *Chief Community Services Officer*

Jeanette Wade, *Chief Financial Officer/Chief Operations Officer*



Ascentria
CARE ALLIANCE

11 Shattuck Street, Worcester, MA 01605

Our Mission

We are called to strengthen communities by empowering people to respond to life's challenges.

Our Vision

We envision thriving communities where everyone has the opportunity to achieve their full potential regardless of background or disadvantage. Together with our partners, we inspire people to help one another reach beyond their current circumstances and realize new possibilities.

Our Values

Faith in Action:

Courage • Compassion • Integrity

